

# PORTABLE GROUND MONITOR

NDD280

- Lightweight
- Low Maintenance
- Compact
- Low Pressure Loss Design
- Highly Durable - Corrosion Resistant Materials



## Description

The Streamline Portable Ground Monitor has been specially designed to combine very lightweight with excellent stability.

It is robust and effective and can very quickly be set-up for use.

It folds compactly for vehicle stowage. It is intended for use in the medium output range, typically up to 400 gpm. (1800 lpm.) but higher outputs can be tolerated by using the anchor spike which is also recommended for use on smooth surfaces to assist in resisting jet reaction forces.

## Specification

The monitor consists of a two way clappered siamese mounted on a folding stainless steel ground frame. The monitor outlet is a ball and socket design which provides direct control over a wide area. The natural reaction force of the water is sufficient to maintain position and at the same time permit adjustment during operation. The inlet siamese incorporates a swinging clapper valve to permit use of a single hose if required.

Standard inlet connections are 2½" NH female swivel but alternative system hose connectors can be fitted. The standard outlet connection is 2½" NH male thread but this can also be adapted as desired to hose connectors to permit the use of various nozzles.

## Materials of Construction

Discharge Head/Outlet .....Light alloy, anodized. External surfaces of discharge head are thermoplastic coated. Swivel ball is coated with reinforced P.T.F.E.

Ground Frame .....Stainless Steel

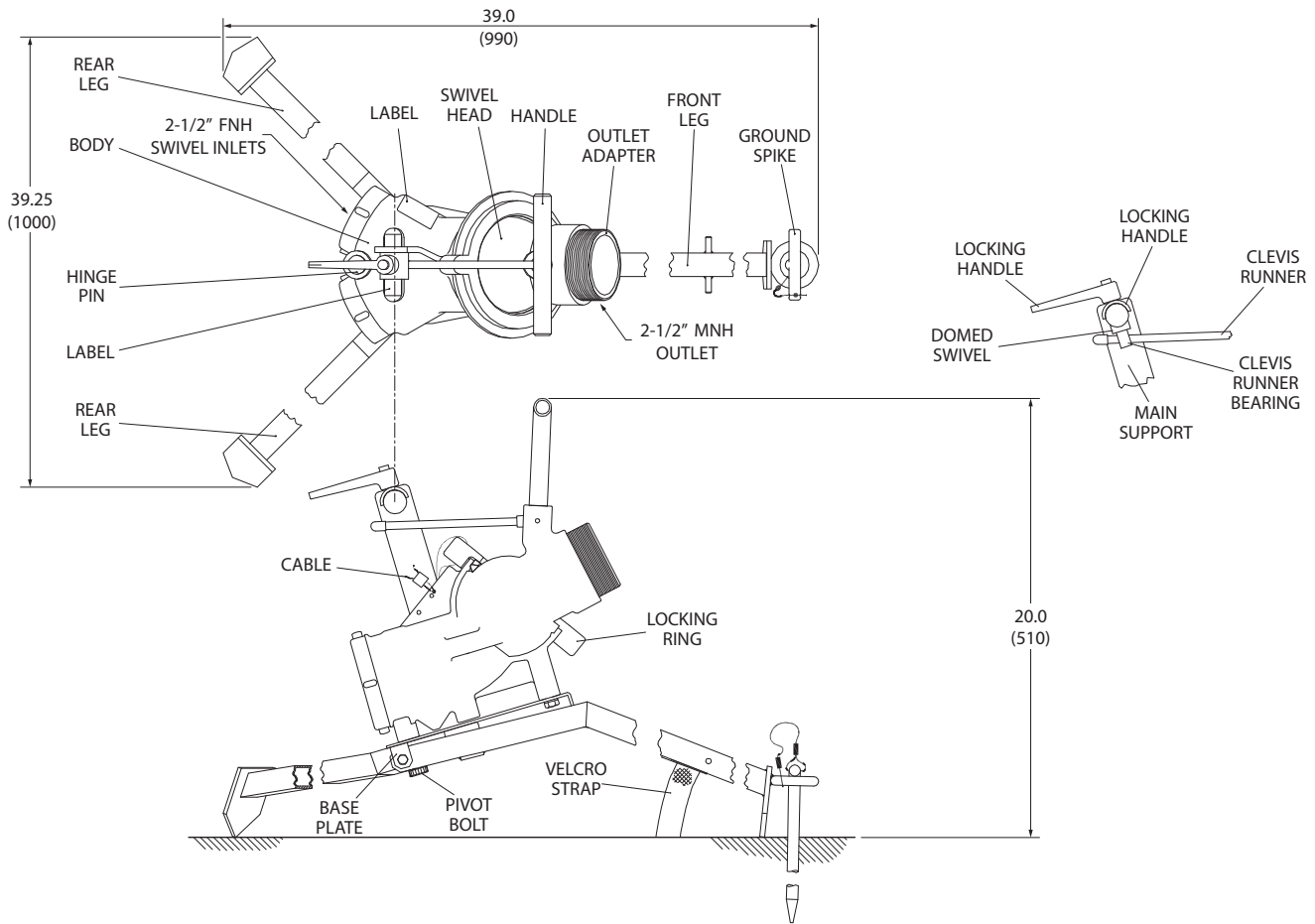
Outlet Connection .....Steel, electroless nickel plated

Internal Fittings .....Stainless Steel

Seals .....Synthetic Rubber

# PORTABLE GROUND MONITOR

NDD280



## ORDERING INFORMATION

Part Number	Description	Overall Dimensions When Folded (Excluding Couplings & Nozzle)			Weight
		L	W	H	
1252-2110-8	Portable Ground Monitor 2-1/2" NH Connections	35.625 in (905 mm)	x 9 in (230 mm)	x 12.75 in (320 mm)	15 lbs. (7 kgs)