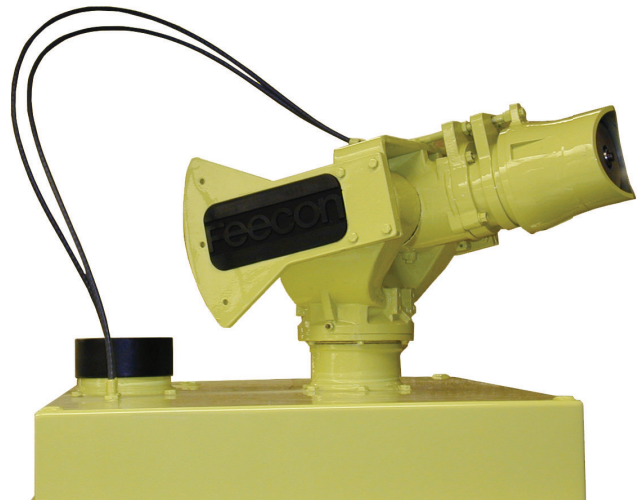


COBRA REMOTE MANUAL ROOF TURRET

FDD040

- Easy To Use Aiming Handle Inside The Cab
- Lightweight Aluminum Construction
- Aspirating & Non- Aspirating Nozzles
- Robust Rugged Design



Description

The Feecon Remote Manual Dual Roof Turret is a manually operated foam and water turret, mounted on the vehicle cab roof, for Aircraft Rescue Firefighting (ARFF) vehicles, capable of discharging water or AFFF solution at flow rates up to 1200 GPM (4545 LPM). The turret is directly controlled from the interior of the vehicle cab and has manually operated rate and pattern control levers and an electric over pneumatic discharge valve located within easy reach of the operator.

A versatile feature of the Remote Manual Roof Turret is electric/pneumatic discharge valve actuation along with manual override capability in the event of power failure. All turret operational functions - turret discharge pattern, rate, rotation, elevation/depression and discharge shutoff valve are located and controlled within the vehicle cab.

The turret air supply is provided through the vehicle at a recommended pressure setting of approximately 100 psi (60 psi minimum - 130 psi maximum). The water/foam supply inlet connection accepts a 5" victaulic coupling only. The turret has a dual flow rate nozzle, that is, full flow and half flow rates. Output wires are provided for throttle activation and signaling the foam proportioning system multi-metering valve.

Remote Manual Turrets from Feecon are designed to meet the requirements of NFPA 414 Standard for Aircraft Rescue

and Fire Fighting Vehicles and FAA Advisory Circular 150/5220-10A Guide Specification for Water/Foam Aircraft Rescue and Firefighting vehicles.

Features

- Air aspirating or non-aspirating nozzle
- Dual rate nozzle
- Built-in air operated discharge valve
- Flow rates to 1200 GPM
- Directional control handle mounted agent discharge switch
- Travel storage lock (Aspirating Turrets only)
- Output signals for actuation of foam proportioning system multi-metering valve
- Electrical connections, located inside the turret box, for providing power to customer supplied spotlight
- Easily field retrofitable to many older vehicles equipped with hydraulic or manual roof turrets

Technical Specifications

Turret shall be a roof mounted manually controlled unit designed to meet the performance requirements of NFPA 414 Standard for Aircraft Rescue and Fire Fighting Vehicles, and FAA Advisory Circular 150/5220-10B Guide Specification for Water/Foam Aircraft Rescue and Fire Fighting Vehicles. It shall be designed for operation with power supplied from the chassis electrical and pneumatic systems. Minimum operating temperature shall be -40 degrees F (- 40 degrees C).

The turret shall have 210° of horizontal rotation travel, and vertical travel from 45° above horizontal to 20° below horizontal, with both rotational and azimuth function controlled by a manual aiming handle located within the truck cab. The turret monitor shall be cast aluminum; split waterway type with a 4" aluminum waterway terminating in a 5" grooved pipe inlet connection. The aluminum nozzle, with customer specified flow rate up to 1500 GPM, shall have a remotely operated, two position orifice which allows discharge at the design flow and half the design flow rate. The water/foam stream pattern shall be infinitely adjustable between straight stream and fog pattern. The nozzle shall be available in either the non-aspirating or air-aspirating configuration. Turret shall include a pneumatically controlled discharge valve with an automatic drain valve installed downstream of the discharge valve to allow the turret waterway to self-drain after the discharge valve has closed. The turret housing shall be constructed of sheet aluminum with a molded plastic inner panel.

Technical Information

Material of Construction:
Aluminum

Operating Pressure:
200 to 220 PSI (14 Bar to 15 Bar)

Flow:
Available in flow rates from 375/750 GPM (1420/2839 LPM) to 600/1200 GPM (2273/4545 LPM)

Agent Capabilities:
Water, AFFF, or Class A

COBRA REMOTE MANUAL ROOF TURRET

FDD040

Technical Information (cont.)

Nozzle Type:

Aspirating or Non-aspirating

Angle:

Rotation:

210° (105° either side of turret center line)

Elevation:

45° above horizontal

Depression:

20° below horizontal

Requirements:

Electrical:

12 V DC models - Maximum 5 Amps

24V DC models - Maximum 2.5 Amps

Pneumatic:

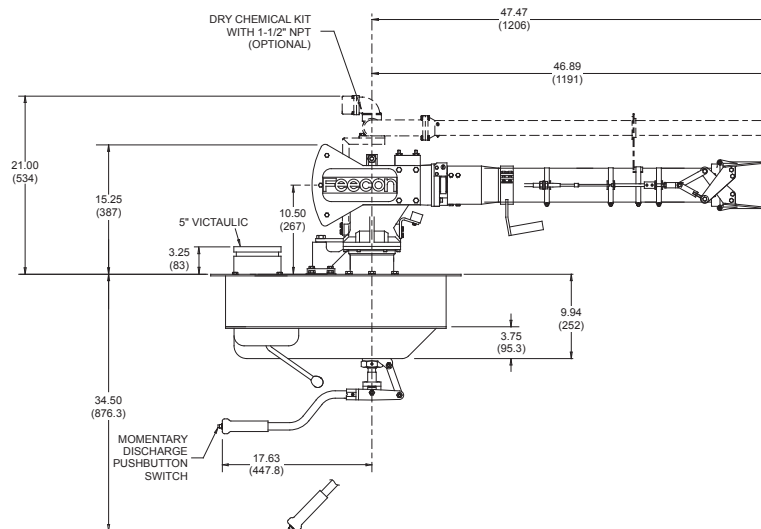
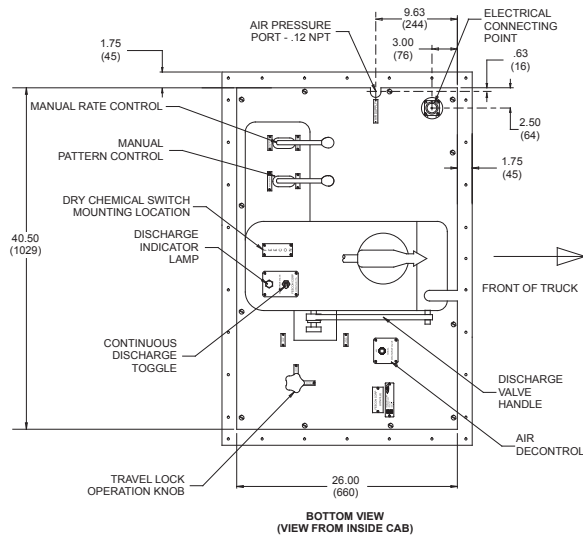
0.9 cfm (406 cc/s) at 60 to 130 psi (4 to 9 bar)

Temperature Range:

0.7 SCFM (330 cc/s) at 130 PSI (9 bar)

Options

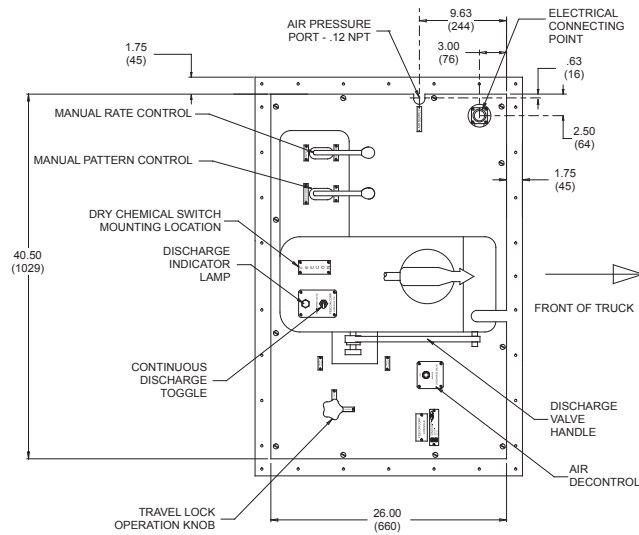
- Bolt-on dry chemical nozzle: 16 lb/sec (7 Kg/sec) at 200 PSI (14 bar)
- 12 V DC or 24 V DC models
- 270° Rotation
- 240° Rotation
- 70° Elevation - 20° Depression
- Halotron Nozzle (Non-Aspirated models only)
- Roof mounted manual controls



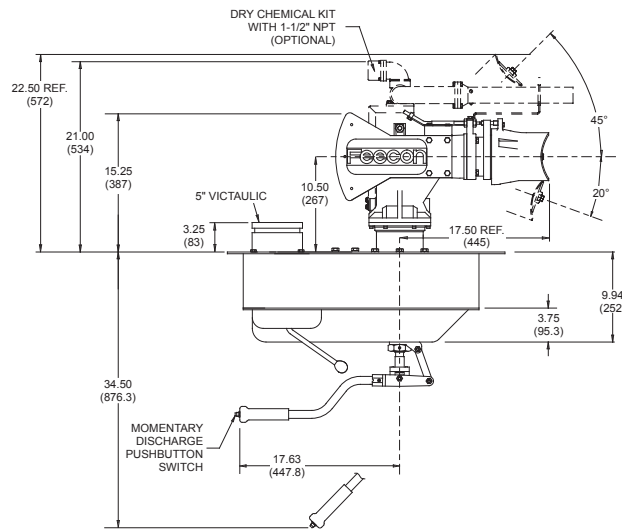
REMOTE MANUAL ASPIRATED ROOF TURRET

COBRA REMOTE MANUAL ROOF TURRET

FDD040



BOTTOM VIEW
(VIEW FROM INSIDE CAB)



REMOTE MANUAL NON-ASPIRATED ROOF TURRET

COBRA REMOTE MANUAL ROOF TURRET

FDD040

ORDERING INFORMATION			
Part Number	Voltage	Flow Rate gpm (lpm) @ psi (Bar)	Finish
Aspirating:			
1252-7215-0	12 VDC	375/750 (1420/2839) @ 220 psi (15 Bar)	Primer
1252-7215-5	24 VDC	375/750 (1420/2839) @ 220 psi (15 Bar)	Primer
1252-7215-8	12 VDC	400/800 (1514/3028) @ 220 psi (15 Bar)	Primer
1252-7215-7	24 VDC	400/800 (1514/3028) @ 220 psi (15 Bar)	Primer
1252-7216-0	12 VDC	500/1000 (1893/3785) @ 200 psi (14 Bar)	Primer
1252-7216-5	24 VDC	500/1000 (1893/3785) @ 200 psi (14 Bar)	Primer
1252-7217-0	12 VDC	600/1200 (2271/4543) @ 200 psi (14 Bar)	Primer
1252-7217-5	24 VDC	600/1200 (2271/4543) @ 200 psi (14 Bar)	Primer
Dry Chemical Kits:			
3217-7016-7		16 PPS (7.3 Kg/Sec)	Primer
Non-Aspirating:			
1252-7210-1	12 VDC	375/750 (1420/2839) @ 220 psi (15 Bar)	Primer
1252-7210-6	24 VDC	375/750 (1420/2839) @ 220 psi (15 Bar)	Primer
1252-7210-4	12 VDC	400/800 (1514/3028) @ 220 psi (15 Bar)	Primer
1252-7210-3	24 VDC	400/800 (1514/3028) @ 220 psi (15 Bar)	Primer
1252-7211-1	12 VDC	500/1000 (1893/3785) @ 200 psi (14 Bar)	Primer
1252-7211-6	24 VDC	500/1000 (1893/3785) @ 200 psi (14 Bar)	Primer
1252-7212-1	12 VDC	600/1200 (2271/4543) @ 200 psi (14 Bar)	Primer
1252-7212-6	24 VDC	600/1200 (2271/4543) @ 200 psi (14 Bar)	Primer
Dry Chemical Kits:			
3217-7015-1		16 PPS (7.3 Kg/Sec)	Primer

National Foam

350 East Union Street, West Chester, PA 19382, USA
 24hr **RED ALERT**® : 610-363-1400 • Fax: 610-431-7084
www.nationalfoam.com

National Foam operates a continuous program of product development. The right is therefore reserved to modify any specification without prior notice and National Foam should be contacted to ensure that the current issues of all technical data sheets are used.
 © National Foam