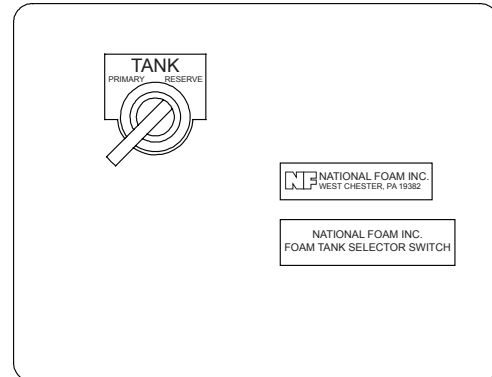


Primary /Reserve Tank Selector Switch

NPR290

- One Level Switch Required Per Tank To Shutdown Multiple Pumps
- Compact, Corrosion Resistant, Watertight, Wall Mount Enclosure
- Power Failure Will Not Inhibit Operation Of The Foam Concentrate Pump(s)



Description

The National Foam Primary / Reserve Tank Selector Switch is used with proportioning systems utilizing a main and reserve tank to supply foam concentrate. The Selector Switch allows the user to select which tank will provide the shutdown signal to the foam concentrate pump(s). It is installed in a wall mount, NEMA 4 enclosure and requires 120 VAC control power for operation.

Features

- Requires only one level switch per tank to shut down multiple pumps.
- Compact, corrosion resistant, watertight, wall mount enclosure.
- Power failure will not inhibit operation of the foam concentrate pump(s).

Applications

- Any proportioning system utilizing a primary and reserve foam concentrate tank requiring pump shutdown when the appropriate tank is empty.

Technical Specification

The Primary / Reserve Tank Selector Switch shall serve to select which low level switch signal will control the shutdown of the proportioning system foam concentrate pump(s), on a tank empty condition, on proportioning systems with a main and reserve foam concentrate tank. A maintained switch shall be used to select which device (low level switch) will initiate the pump shutdown. When the selected tank low level switch transfers, a relay shall be energized to initiate shutdown of the foam concentrate pumps. The 4PDT relay shall supply two NC contacts for shutdown of a primary and reserve pump, a NO contact to shutdown a jockey pump and a Form C contact for remote annunciation of the low level condition. Contact rating for the relay shall be 10 AMP. All operators shall be rated at a minimum of NEMA 4, 4X, & 13. Operational voltage shall be 115VAC, 60HZ. In the event of power failure, the switch shall not inhibit the starting of the foam concentrate pumps.

The Primary / Reserve Tank Selector Switch shall be supplied standard in a

wall mount, fiberglass enclosure rated NEMA 3, rain-tight and NEMA 4X, water-tight and corrosion resistant which is suitable for exterior mounting without any additional protection. Enclosures shall have a red polyurethane finish. The unit shall be factory assembled and tested requiring only field connection of control wiring.

Technical Data

Electrical Data:

Lamps 120V, 3 Watt, 120PSB,
clear, 10,000 hr. av., T-2,
ANSI #5 Slide base
Contact Max. Amp..... 10 Amp
continuous @ 600 VAC
Operating Voltage 1/60/120 VAC
Switch Maintained Contact

Enclosure Ratings:.....NEMA 3 Rain-tight;
NEMA 4X, Water-tight,
Corrosion Resistant

Switch Ratings:..... NEMA 4, 4X & 13

Materials of Construction:

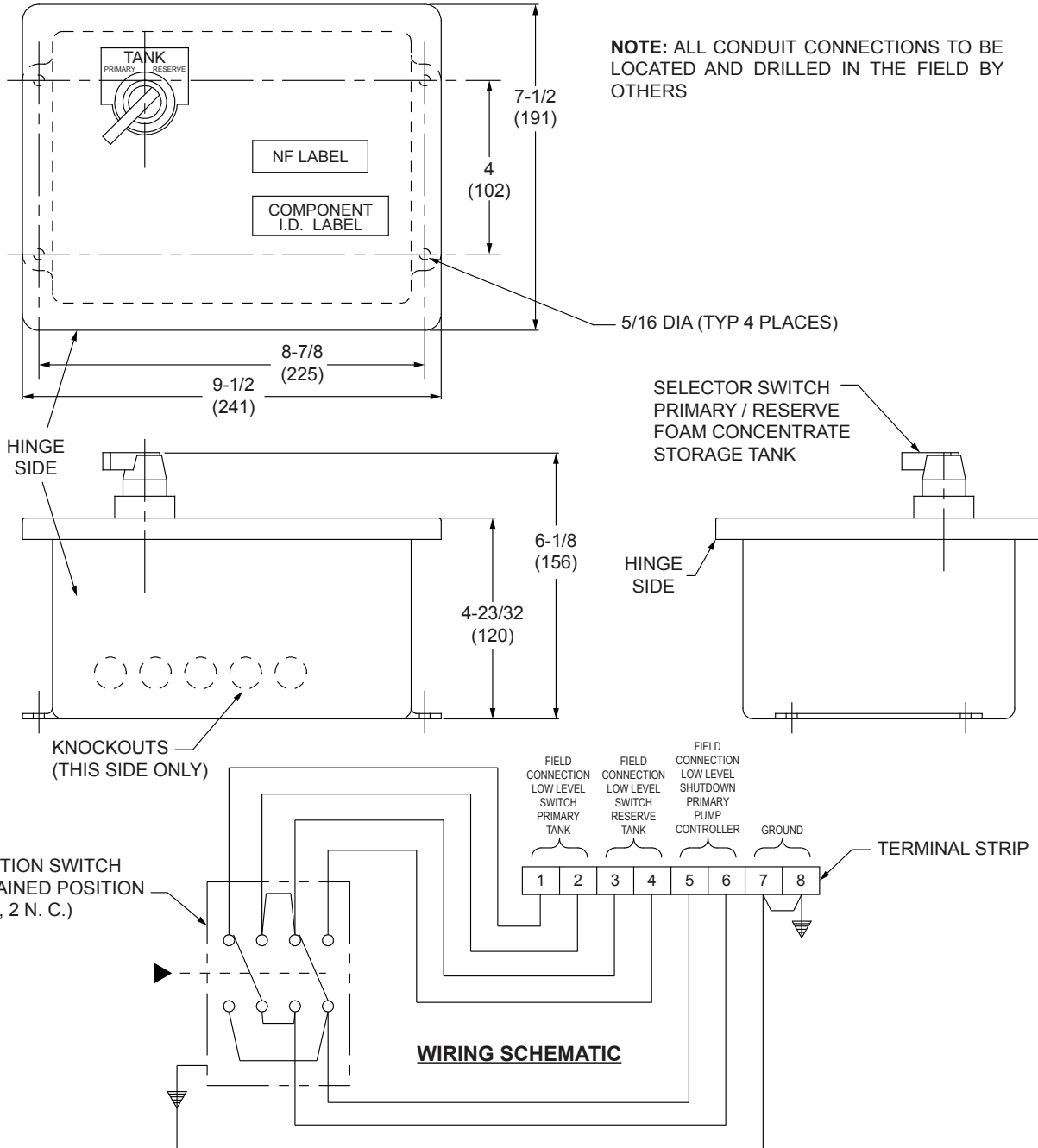
Enclosure Fiberglass
Hardware Stainless Steel
Operators..... Die cast zinc w/ chrome
plating, SS internals

Weight: 5 LBS (2.26 kg)

Finish:..... Gray

Primary /Reserve Tank Selector Switch

NPR290



ORDERING INFORMATION

Part Number	Description
1271-1120-0	Tank Selector Switch